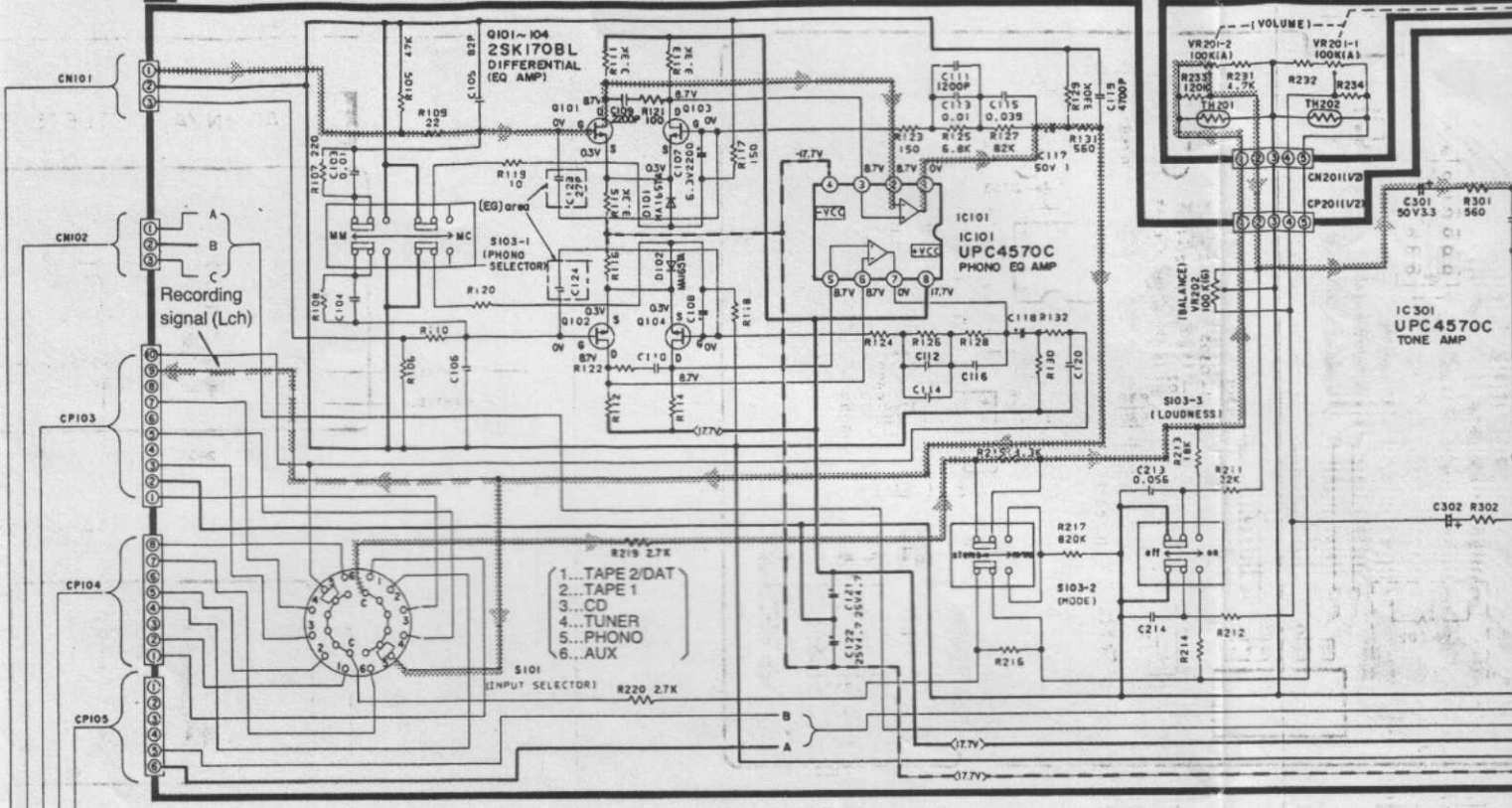
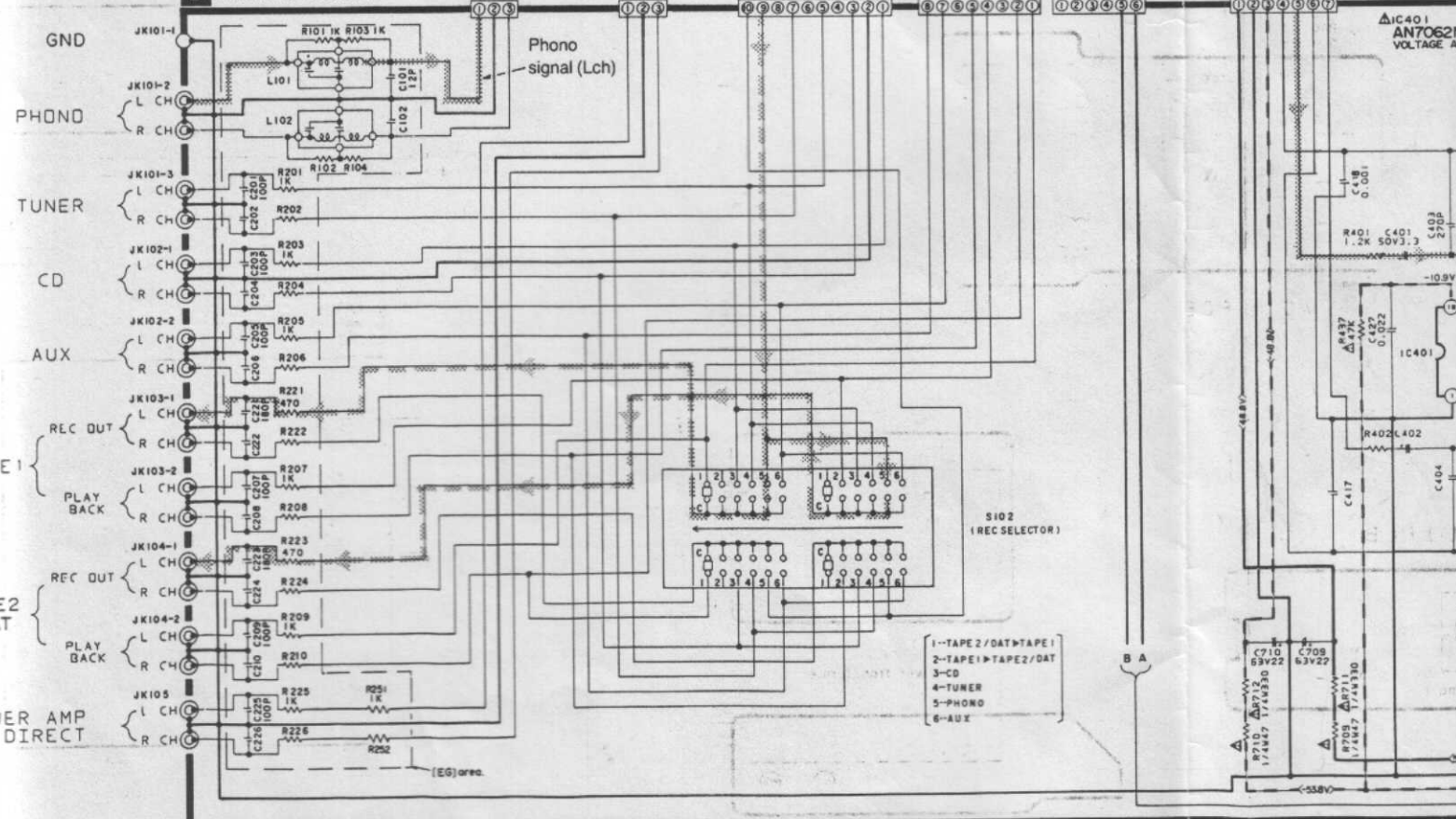


A PHONO EQ/TONE-AMP CIRCUIT

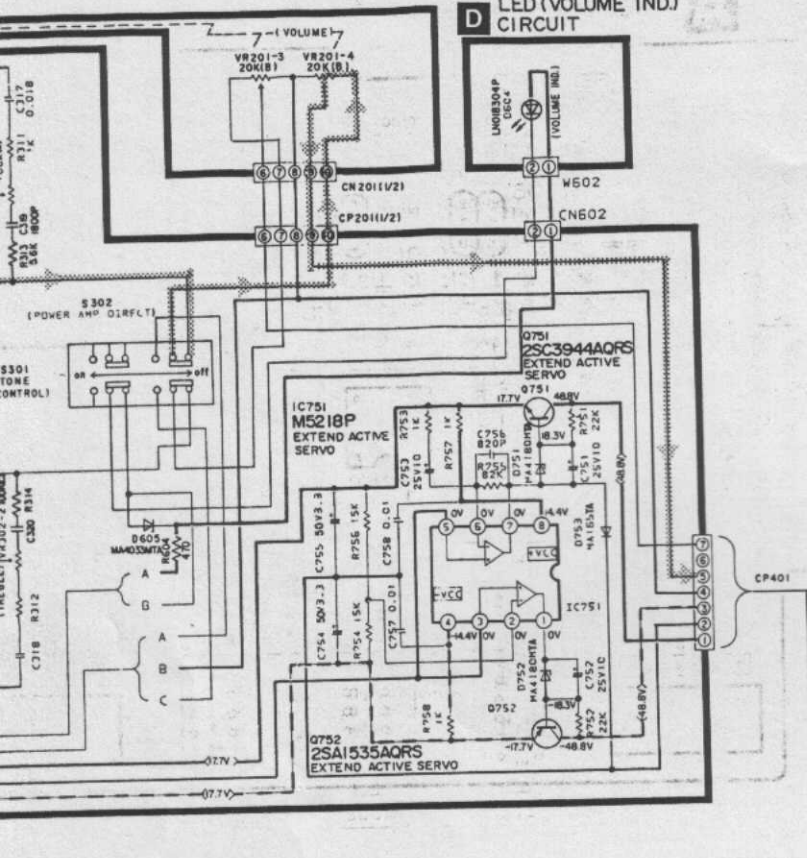
C VOLUME CIRCUIT



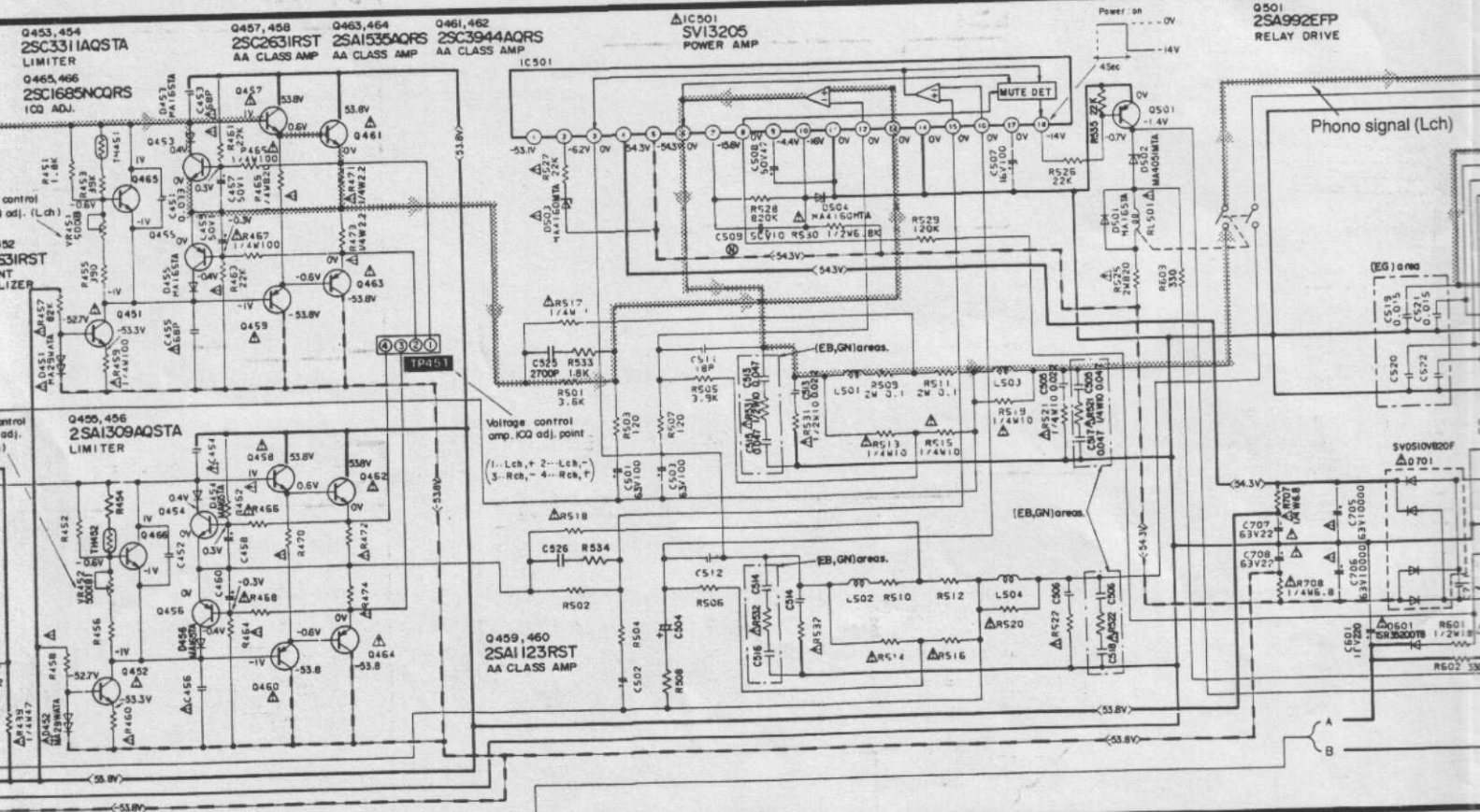
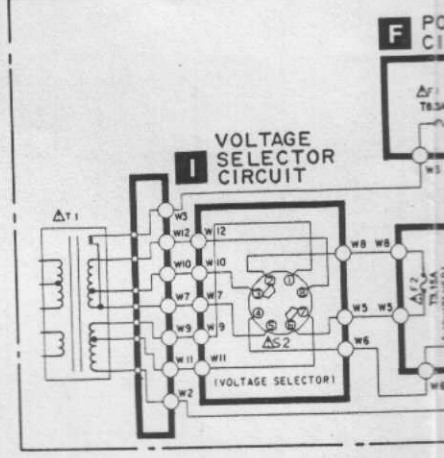
B MAIN CIRCUIT



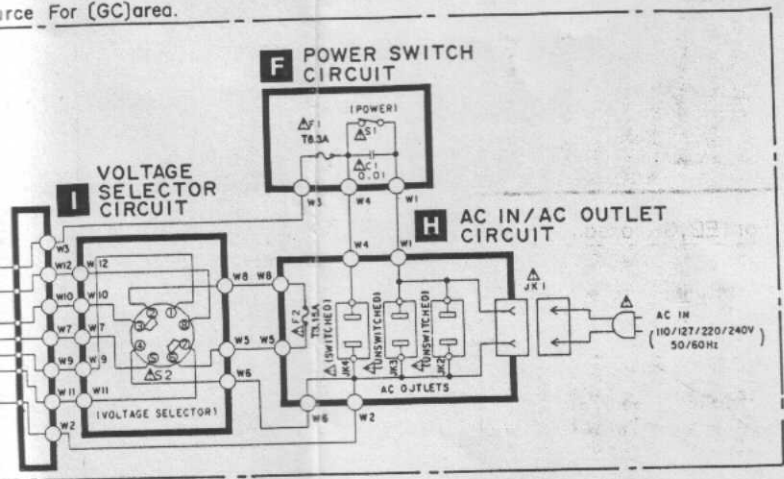
D LED (VOLUME IND.) CIRCUIT



Power Source For (GC) area.



Source For (GC) area.

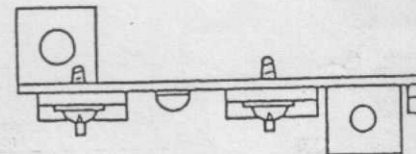


- Control positions and equipment
- Volume knob.....∞ (Minimum)
 - Main speaker selector.....C

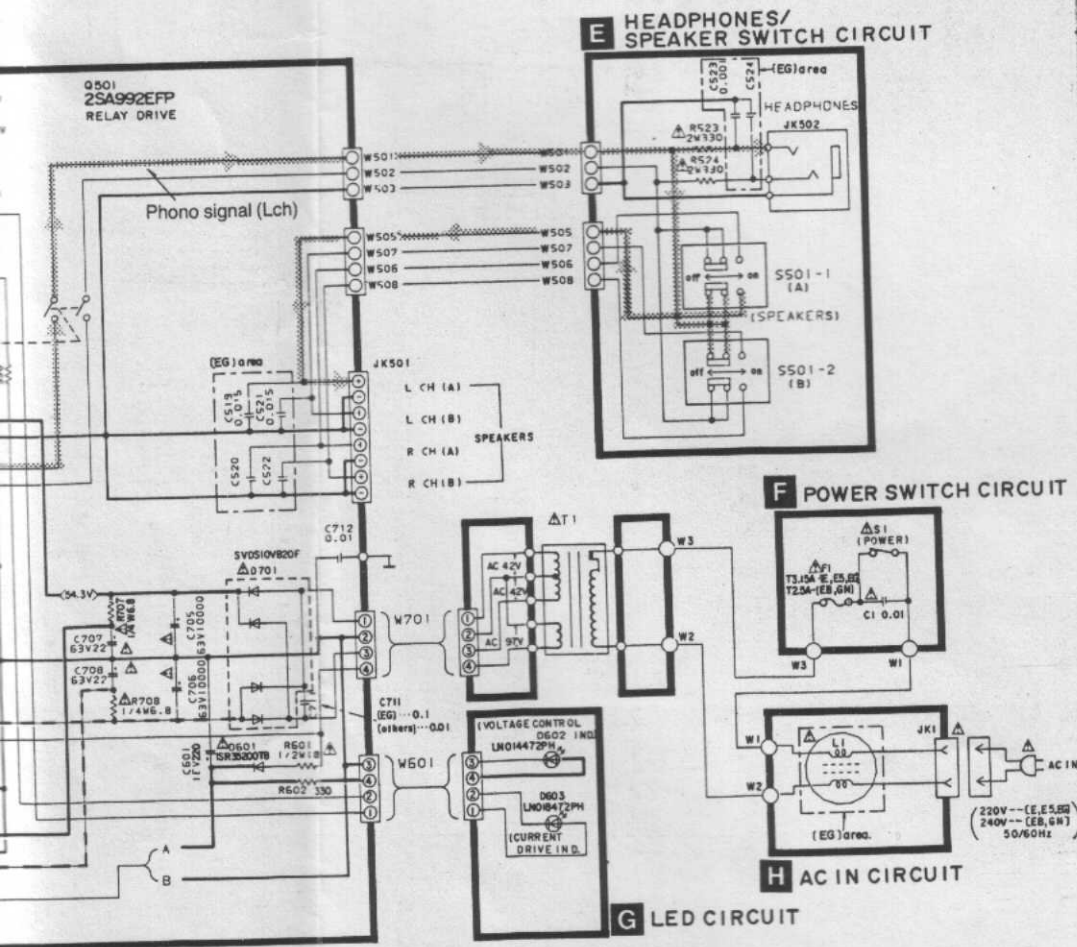
VOLTAGE CONTROL (V) AMP. ADJUSTMENT

1. Test equipment connection is shown in EVM on both channels.
2. Completely turn the (V) amp. adjusting counter-clockwise.
3. Turn ON the set when it is cold, and adjust VR451 and VR452 so that the voltage is 25V. Also, check that the voltage is 25V after lapse of 10-15 minutes. (Before 60 min.)

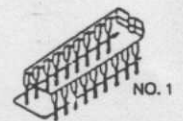
- Adjustment points Voltage control



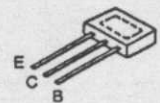
VR451



TERMINAL GUIDE



2SC3311, 2SA1309



MA165, MA16, MA4051
MA29, 1SR35200TB

